

# Workshop Offerings Spring/Summer 2016

RESOURCES

KNOWLEDGE

PARENT  
LEADERSHIP

INFORMATION

SUPPORT

## SPAN Workshops: Building Bridges To Success



**SPAN**



**Empowered Families:  
Educated,  
Engaged,  
Effective!**

**Statewide Parent Advocacy Network  
35 Halsey Street, Newark, NJ • [www.spanadvocacy.org](http://www.spanadvocacy.org)**

*Effective March 1, 2016*

# Make A Difference....

The SRP Program is an intensive training program designed to educate volunteers to assist parents of children with disabilities and special health needs in understanding their rights and responsibilities under federal and state laws. Participants will learn strategies on how to obtain appropriate educational programs and related services for children and youth. Attendees, both parents and professionals, are provided with extensive training and ongoing support to help them understand the dynamics of the systems that serve children with special needs. Individuals who complete the entire training series will receive a compilation of useful local, state and national resources and will be prepared to provide support to families around issues or concerns they may have about their child's education and development.

**Become an SRP and volunteer your time to help families!**



Become A  
**SPAN Resource Parent**  
SRPs make a difference for families of children with special needs every day.  
**Won't you join us?**

"It takes each of us to make a difference for all of us."  
-Jackie Mutcherson  
Teacher

**6 week program includes:**

- Session 1 - Basic Rights & Resources for Families
- Session 2 – Laws/Regulations & LRE/Inclusion
- Session 3 – IEP & Transition to Adult Life
- Session 4 - Student Supports & Self Determination
- Session 5 - Advocacy & Leadership Skills
- Session 6 - Health Advocacy & Health Manual

**North**  
Morris County  
Family Success Center  
Dover, NJ

2016 Dates:  
March 30  
April, 6, 13, 20, 27  
May 4

[www.srp2016north.eventbrite.com](http://www.srp2016north.eventbrite.com)

**Central**  
Easter Seals  
East Brunswick, NJ

2016 Dates:  
July 12, 14, 19, 21, 26, 28

[www.srp2016central.eventbrite.com](http://www.srp2016central.eventbrite.com)

**South**  
Bayada Pediatrics  
Mount Laurel, NJ

2016 Dates:  
March 1, 8, 15, 22, 29  
April 4

[www.srp2016south.eventbrite.com](http://www.srp2016south.eventbrite.com)

All Sessions are from 9:30am – 3:00pm  
Lunch will be provided  
**REGISTRATION IS REQUIRED**

**For more information contact:  
Dawn Monaco at 973-654-8181 X193 or [dmonaco@spannj.org](mailto:dmonaco@spannj.org)**



Statewide Parent Advocacy Network 35 Halsey Street – 4<sup>th</sup> Floor, Newark, NJ 07102 ~ 973-642-8100 ~ [www.spannj.org](http://www.spannj.org)



# SPAN Workshops: Building Bridges To Success

The Statewide Parent Advocacy Network (SPAN) has been providing workshops for parents and professionals for over 25 years. We provide information and resources combined with hands on activities. Our workshops are also a great opportunity to connect with other parents who “understand” what you are experiencing. Workshops last approximately 2 hours. Learn new information and develop skills to apply this new knowledge in real life situations. Professional Development certificates available at every workshop.



**Don't miss out...sign up for a workshop today!**

***SPAN empowers families, professionals and communities interested in the health, well-being and education of children.***

## WHY ATTEND?

SPAN workshops are an excellent way to increase knowledge of your rights regarding your child's educational or health needs and improve your ability to secure appropriate services for your child.

## TRANSLATION?

All workshops are available in English and Spanish. Sign Language interpretation can also be made available. If you have additional translation needs, please let us know.

**SERVING  
FAMILIES FOR  
OVER 25 YEARS!**



*SPAN workshops are funded by:*

*US Dept. of Education, Office of Special Education Programs; US Dept. of Health and Human Services; New Jersey Dept. of Education, Office of Special Education Programs; New Jersey Bar Foundation; IOLTA; New Jersey Council on Developmental Disabilities*

Register at [www.spanworkshopregistrations.eventbrite.com](http://www.spanworkshopregistrations.eventbrite.com)

You are cordially invited to attend the

## Transition Conference:

# “Discover the Road Ahead!”

A conference for parents,  
and students & young adults  
with disabilities



## How to Make a Smooth *Transition*

**Saturday, April 16, 2016**  
**9 am ~ 3 pm at**  
**Pemberton Township High School**

Featuring agency representatives conducting workshops on such topics as:

- Resources for Independent Living • Supportive Decision Making • IEP Planning
- Student Guided Self Determination • College Connection—and much more!

To register and for more information go to:  
<https://life-after-high-school.eventbrite.com>

Sponsored by:

The New Jersey National Guard Child & Youth Program • SPAN  
JB MDL Military Family Support Center • Military Family Support 360  
Pemberton Township Schools • New Jersey Department of Education



**WORKSHOP/EVENT****PAGE****GOING?**

Basic Rights In Special Education	6	<input type="checkbox"/>
Bullying Prevention Strategies	11	<input type="checkbox"/>
Creating Agreement: Working Together To Resolve Conflict	11	<input type="checkbox"/>
Developing an IEP with Measurable Goals	8	<input type="checkbox"/>
Developmental Milestones Chart	18	<input type="checkbox"/>
Essential Components of the IEP	8	<input type="checkbox"/>
Interventions and Supports for Struggling Students	10	<input type="checkbox"/>
Least Restrictive Environment – Including ALL Children	9	<input type="checkbox"/>
Literacy Strategies for Families	10	<input type="checkbox"/>
Look To The Future: Transition from School to Adult Life	14	<input type="checkbox"/>
Navigating the Healthcare System	15	<input type="checkbox"/>
NJ Resources For Families	7	<input type="checkbox"/>
Paperwork For Families: Get Organized!	7	<input type="checkbox"/>
Parents as Leaders in Early Childhood	16	<input type="checkbox"/>
PBS – Addressing Challenging Behavior	9	<input type="checkbox"/>
Problems at School? A 504 Plan May Help	12	<input type="checkbox"/>
Procedural Safeguards – Protections Under IDEA	12	<input type="checkbox"/>
Rights of Youth In the Child Welfare or Juvenile Justice System	13	<input type="checkbox"/>
SPAN Resource Parent Training – Make A Difference!	2	<input type="checkbox"/>
Supported Decision Making – Alternatives to Guardianship	21	<input type="checkbox"/>
Transition from Early Intervention to Preschool	17	<input type="checkbox"/>
Transition from School to Adult Life: Discover the Road Ahead	4	<input type="checkbox"/>



## Basic Rights In Special Education

### SCHEDULE

- 3/1/16 in Vineland, Cumberland County
- 3/9/16 in Bayonne, Hudson County
- 3/28/16 in Bayville, Ocean County
- 4/13/16 in Manalapan, Monmouth County
- 4/14/16 in Dover, Morris County
- 4/20/16 in Bloomfield, Essex County
- 5/26/16 in Bridgeton, Salem County
- 9/1/16 in Cape May Courthouse, Cape May County
- 9/15/16 in Willingboro, Burlington County

### EN ESPAÑOL

- 3/15/16 in Phillipsburg, Warren County

Whether you're new to special education or have been involved for a while, this workshop is for you. This presentation provides families with an introduction to their rights and responsibilities as parents of children with special needs under the Individuals with Disabilities Education Act (IDEA), the New Jersey Code, and Section 504 of the Vocational Rehabilitation Act. Parents begin to identify dreams and goals for their children, understand laws and learn advocacy strategies that will help them help their children reach those goals. Parents of classified children and children who are having difficulty in school, but may not be classified, will benefit from this training.



## NJ Resources for Families

### SCHEDULE

- 3/12/16 in Forked River  
Ocean County
- 8/18/16 in Newton  
Sussex County

This workshop will cover the many resources available in NJ to families of children with special needs. There will be an overview of government agencies, educational programs, community service providers and disability specific organizations. Information on how to access programs and services will also be provided. Detailed information about SPAN, New Jersey's federally funded PTI (Parent Training & Information Center) will be shared.



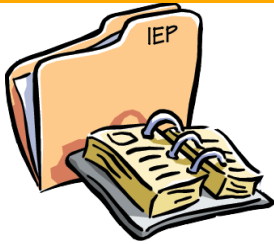
## Paperwork for Families: Get Organized!

### SCHEDULE

- 4/26/16 in Gillette  
Morris County
- 9/27/16 in Mt. Holly  
Burlington County

Are you overwhelmed by the mountains of paperwork created by your child's school records? Not sure what to keep, what to toss? Want to be better prepared for that next meeting at school? Join us for this hands-on workshop to finally get those papers organized so you can more effectively advocate for your child. **Participants should bring a 3 ring binder and their child's most recent school records.** We will provide you with resources and strategies so you leave organized for success!





## Essential Components of the IEP

### SCHEDULE

- 3/15/16 in Westampton  
Burlington County
- 4/14/16 in Newark  
Essex County

**Bring your IEP** and join us for this interactive workshop that provides participants with a review of the essential components of an Individualized Education Plan. As a result of this workshop, participants will better understand the IEP document and the parent's role in the development of an IEP. How to address IEP concerns/issues in a proactive and positive way will be discussed. During this session, **attendees will review their own IEP document** and will be given tools to support their participation in the development of future Individualized Education Plans.



## Developing an IEP with Measurable Goals

### SCHEDULE

- 3/16/16 in Pleasantville  
Atlantic County
- 4/28/16 in Newark  
Essex County

This workshop provides parents and professionals with strategies to create an IEP with measurable annual goals and objectives as well as the required information regarding student progress. Step-by-step guidance in writing measurable goals to meet student needs is provided. Maintaining high expectations and accountability through the measurement of student progress is also discussed.





## Least Restrictive Environment: Including ALL Children

### SCHEDULE

- 3/7/16 in Green Brook Somerset County
- 4/7/16 in Basking Ridge Somerset County
- 4/8/16 in Wayne Passaic County
- 6/16/16 in Sicklerville Camden County
- 9/29/16 in Willingboro Burlington County

Inclusion is a right, not a privilege. The Individuals with Disabilities Education Act requires students with disabilities be educated with their non-disabled peers to the maximum extent appropriate. Learn how the IEP impacts placement, the legal requirements for Least Restrictive Environment and the value of the inclusion of children with disabilities for all children, their families and communities.

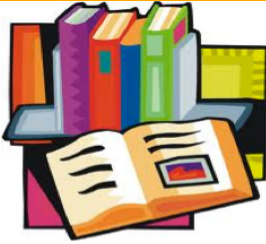


## PBS: Addressing Challenging Behavior

### SCHEDULE

- 3/22/16 in Clementon Camden County
- 9/22/16 in Newark Essex County

There is often a cycle of failure for students with behavioral challenges. This workshop will focus on interventions for students who exhibit challenging behaviors (e.g. aggression, self-injury, tantrums). Identifying the function of behavior will be discussed with an emphasis on educational strategies that help students learn alternate behaviors that can lead to long-term change. Information on due process rights of children in the discipline process is also provided.



## Literacy Strategies for Families

### SCHEDULE

- 3/1/16 in Newton  
Sussex County
- 3/22/16 in Elizabeth  
Union County
- 4/13/16 in West New York  
Hudson County
- 5/18/16 in Pleasantville  
Atlantic County
- 7/26/16 in Mt. Holly  
Burlington County

Families play a crucial role in their child's reading development. Families support their children's reading success in many ways - by spending time together reading, making quality reading materials available at home and working with their child's teacher. This workshop will help families to support their child's reading achievement, especially children who are struggling readers. Fun, hands-on activities and other resources to use with children will be provided.



## Interventions & Supports for Struggling Students

### SCHEDULE

- 4/20/16 in Jackson  
Ocean County
- 10/12/16 in Newark  
Essex County

Students who may be struggling academically and/or behaviorally can often benefit from early and intensive services and supports. This workshop will provide information on resources and helpful strategies for use at school and at home to help avoid student failure. Information on multi-tiered interventions, including RTI, and student progress monitoring will be shared.



## Creating Agreement: Working Together To Resolve Conflict

### SCHEDULE

- 3/9/16 in Phillipsburg Warren County
- 4/13/16 in Hillsborough Somerset County
- 4/19/16 in Glassboro Gloucester County
- 6/9/16 in Newton Sussex County

This workshop will focus on helping parents and professionals “create agreement” and avoid, minimize, or appropriately address, conflict. Participants will explore the benefits and challenges of parent-professional collaboration, learn best practices for creating agreement, address power imbalances and implement cultural reciprocity. Individuals will learn how to resolve conflict and “create agreement” when working with others.



## Bullying Prevention Strategies

### SCHEDULE

- 3/16/16 in Lumberton Burlington County
- 4/19/16 in Phillipsburg Warren County
- 5/31/16 in Mt. Holly Burlington County

Bullying is a harmful action towards another student or any act that infringes on a student's rights at school. It is important to know ways to prevent and respond to bullying in school. This presentation will discuss what schools are required to do under the law including creating a positive environment for ALL students. Come join the conversation regarding what students, families, educators and communities can do to help in providing a safe and welcoming environment for all students.



## Procedural Safeguards: Protections Under IDEA

### SCHEDULE

- 7/26/16 in Hamilton Mercer County
- 10/19/16 in Newark Essex County

Procedural safeguards are the protections afforded students and their families by the IDEA (Individuals with Disabilities Education Act). This presentation will provide information on parental rights under the law. Join us to learn how to respond when problems arise.

# 504

## Problems at School? A 504 Plan May Help

### SCHEDULE

- 3/24/16 in Flemington Hunterdon County
- 4/13/16 in Newark Essex County
- 5/3/16 in Newton Sussex County
- 5/18/16 in Northfield Atlantic County

If your student is struggling in school, he/she may be more successful if they have needed interventions and assistance. Learn how a 504 accommodation plan can get your child the help they need. This workshop focuses on the right to services and accommodations for students with disabilities and special health/emotional needs.





## Rights of Youth in the Juvenile Justice System

### SCHEDULE

- 3/17/16 in Newark  
Essex County
- 5/11/16 in Somerville  
Somerset County
- 6/6/16 in Phillipsburg  
Warren County

Children and youth with disabilities are overrepresented in NJ's Juvenile Justice system. These youth maintain their rights to appropriate education and health services. This presentation will explain these rights and their parents rights regarding decision making for their children.



## Rights of Youth in the Child Welfare System

### SCHEDULE

- 3/29/16 in Hamilton  
Mercer County
- 4/6/16 in Dover  
Morris County
- 4/12/16 in Vineland  
Cumberland County
- 5/11/16 in Woodland Park  
Passaic County
- 5/17/16 in Jersey City  
Hudson County
- 6/7/16 in Sicklerville  
Camden County
- 6/9/16 in Flemington  
Hunterdon County

Youth involved in NJ's child welfare system do not lose their rights to appropriate education or health services. This workshop will provide a brief overview of NJ's child welfare system and describe the education and health rights of juveniles. The overrepresentation of children and youth with special needs will also be addressed.



## Look To The Future: Transition to Adult Life

### SCHEDULE

- 3/7/16 in Ridgewood, Bergen County
- 3/8/16 in Gillette, Morris County
- 3/23/16 in Manville, Somerset County
- 4/5/16 in Washington, Warren County
- 4/7/16 in Westville, Gloucester County
- 4/12/16 in Holmdel, Monmouth County
- 4/13/16 in Hamilton, Mercer County
- 4/20/16 in Pleasantville, Atlantic County
- 4/27/16 in Flemington, Hunterdon County
- 5/4/16 in East Brunswick, Middlesex County
- 5/10/16 in Vineland, Cumberland County

### EN ESPAÑOL

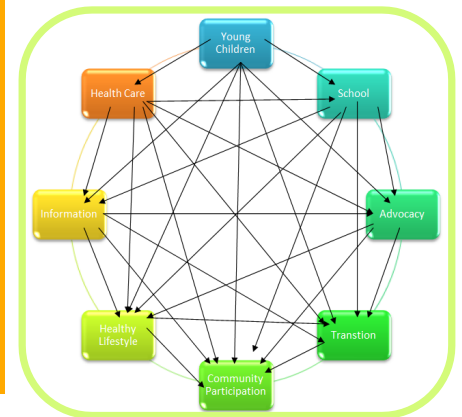
- 4/6/16 in Woodland Pk, Passaic County

Transition planning is crucial to increasing successful outcomes for life after high school. This workshop will discuss issues related to transitioning from school to adult life. Activities and discussion to help identify interests, future plans, and supported decision making will be included. Strategies for developing appropriate goals as part of the IEP process will be offered. Parents and students will be informed about resources in the community they can connect with to build linkages, and ensure a dignified life as a contributing and participating member of their community.





## Navigating the Healthcare System



### SCHEDULE

- 3/9/16 in Livingston  
Essex County
- 4/18/16 in Jersey City  
Hudson County
- 4/21/16 in Englewood  
Bergen County
- 4/27/16 in Hamilton  
Mercer County
- 5/3/16 in Somerville  
Somerset County
- 5/5/16 in Willingboro  
Burlington County
- 5/10/16 in Westville  
Gloucester County
- 5/16/16 in Forked River  
Ocean County
- 5/26/16 in Flemington  
Hunterdon County
- 5/26/16 in Whitesboro  
Cape May County
- 6/8/16 in Phillipsburg  
Warren County
- 6/15/16 in Woodland Park  
Passaic County

### PART 1

#### Accessing Health Care Coverage and Services For Your Family

Many families have difficulty accessing health coverage and services for children with special health care needs. This workshop will provide information about the various insurance models- who is eligible, what is covered and how to apply. Information on the benefits of the Affordable Care Act will also be provided. Suggestions on what to do if you are having difficulty accessing health care services will be offered.

### PART 2

#### Health Manual Workshop Health Advocacy Across the Lifespan

is an *Advocacy Manual* developed by individuals with disabilities and special healthcare needs and their families to help other families.

This workshop will show you how to use the manual to navigate the healthcare system. Think of it as a GPS for families of children, youth and adults with disabilities & special healthcare needs.

*These sessions are 1 hour each presented back to back to help you navigate the healthcare system.*



## Parents as Leaders in Early Childhood: Creating Change so ALL Children Succeed

This conference will help families develop their skills advocating for their children and impacting the systems that affect their children birth to age 8 and beyond. Parents will have the opportunity to gain skills for participating on decision-making groups. Connect with parents who are creating change so ALL Children Succeed.

**A panel of parents and professionals will discuss best practices in addressing:**

- Family Literacy
- Access to High Quality Early Care and Education
- Inclusion in Early Childhood
- Positive Behavior Supports in Early Childhood Programs
- Early Learning Issues and More

*With knowledge, tools, and passion parents can help ALL children succeed.*

**Target Audience:** Parents, grandparents, caretakers, professionals and educators of children birth to age 8.

**South**  
Saturday, April 2  
9am-1pm  
Atlantic Cape  
Community College  
C Building  
5100 Black Horse Pike,  
Mays Landing, NJ 08330

**North**  
Saturday, April 16  
9am-1pm  
Leaguers  
405-425  
University Avenue  
Newark, NJ 07102

**Central**  
Saturday, April 30  
9am-1pm  
Neptune Middle School  
2200 Heck Ave  
Neptune, NJ 07753

**To register online:** <http://tinyurl.com/start-upcomingevents>

**To register by phone:** 1-973-642-8100 ext. 123

**For more information:** call 973-642-8100 ext. 123 or email [start@spannj.org](mailto:start@spannj.org)

Certificates for professional development hours will be available.

Co-sponsored by Statewide Parent Advocacy Network (SPAN), New Jersey Department of Education Office of Special Education Programs (NJOSPEP) and Funded by IDEA Part B, and The New Jersey Department of Children and Families' (DCF) Division of Family and Community Partnerships (FCP) Race to the Top-Early Learning Challenge Grant (RTT-ELC)



## Need to learn more about Preschool Special Education Services?

Are you the parent of a child receiving Early Intervention services who will be turning 3 soon? The Regional Early Intervention Collaboratives offer workshops with information on Transitioning Your Child from Early Intervention to Preschool Special Education Services.

### Workshop Highlights:

- Transition planning in the IFSP
- Understanding your IFSP Transition Page
- Talking to your Service Coordinator about Transition
- The Transition Process and Timelines
- IDEA – Components of the Federal Law
- Inclusion/Least Restrictive Environment
- Eligibility & Registration Requirements
- Learn about your Parental Rights and family resources for the school aged years
- Helpful Tips



### Regional Early Intervention Collaboratives

- Southern New Jersey Early Intervention Collaborative (serving Atlantic, Burlington, Camden, Cape May, Cumberland, Gloucester and Salem Counties): [www.njeis.org/snjreic](http://www.njeis.org/snjreic)
- Northeast Regional Early Intervention Collaborative (serving Bergen, Hudson and Passaic Counties): [www.nreic.org](http://www.nreic.org)
- Mid-Jersey CARES for Special Children REIC (serving Hunterdon, Mercer, Middlesex, Monmouth, Ocean and Somerset Counties): [www.cnjmchc.org](http://www.cnjmchc.org)
- Family Link REIC (serving Essex, Morris, Sussex, Union and Warren Counties): [www.njeis.org/familylink/](http://www.njeis.org/familylink/)

Learn the Signs. Act Early.

**T**he journey of your child's early years includes many developmental milestones for how he or she plays, learns, speaks, and acts.

Look inside to learn what to look for in your child. Talk with your child's doctor about these milestones.

Not reaching these milestones, or reaching them much later than other children, could be a sign of a developmental delay.

### **YOU KNOW YOUR CHILD BEST.**

If you are concerned about your child's development, talk to your child's doctor.

If you or the doctor is still concerned, ask the doctor for a referral to a specialist and call **800-654-7726** to learn how to get connected with your state's early childhood system to get the help your child might need.

### **DON'T WAIT.**

Acting early can make a real difference!



For more information about your child's development and what to do if you have a concern, visit:

**SPAN**  
[www.SPANadvocacy.org](http://www.SPANadvocacy.org)  
800-654-7726

**NJ Early Intervention**  
(ages 0 to 3 years)  
888-653-4463

**Project Child Find (ages 3 to 21)**  
800-322-8174

**Inquire About an Evaluation:**  
**CNNH**  
[www.CNNH.org](http://www.CNNH.org)  
855-852-8150

Developmental milestones adapted from Caring for Your Baby and Young Child: Birth to Age 5 (AAP, 2009) and Bright Futures: Guidelines for Health Supervision of Infants, Children, and Adolescents (AAP, 2008).



## Track Your Child's Developmental Milestones



Your child's early development is a journey. Use this map of milestones to know what to look for along the way.

For parents of children from birth to 4 years



Statewide Parent  
Advocacy Network

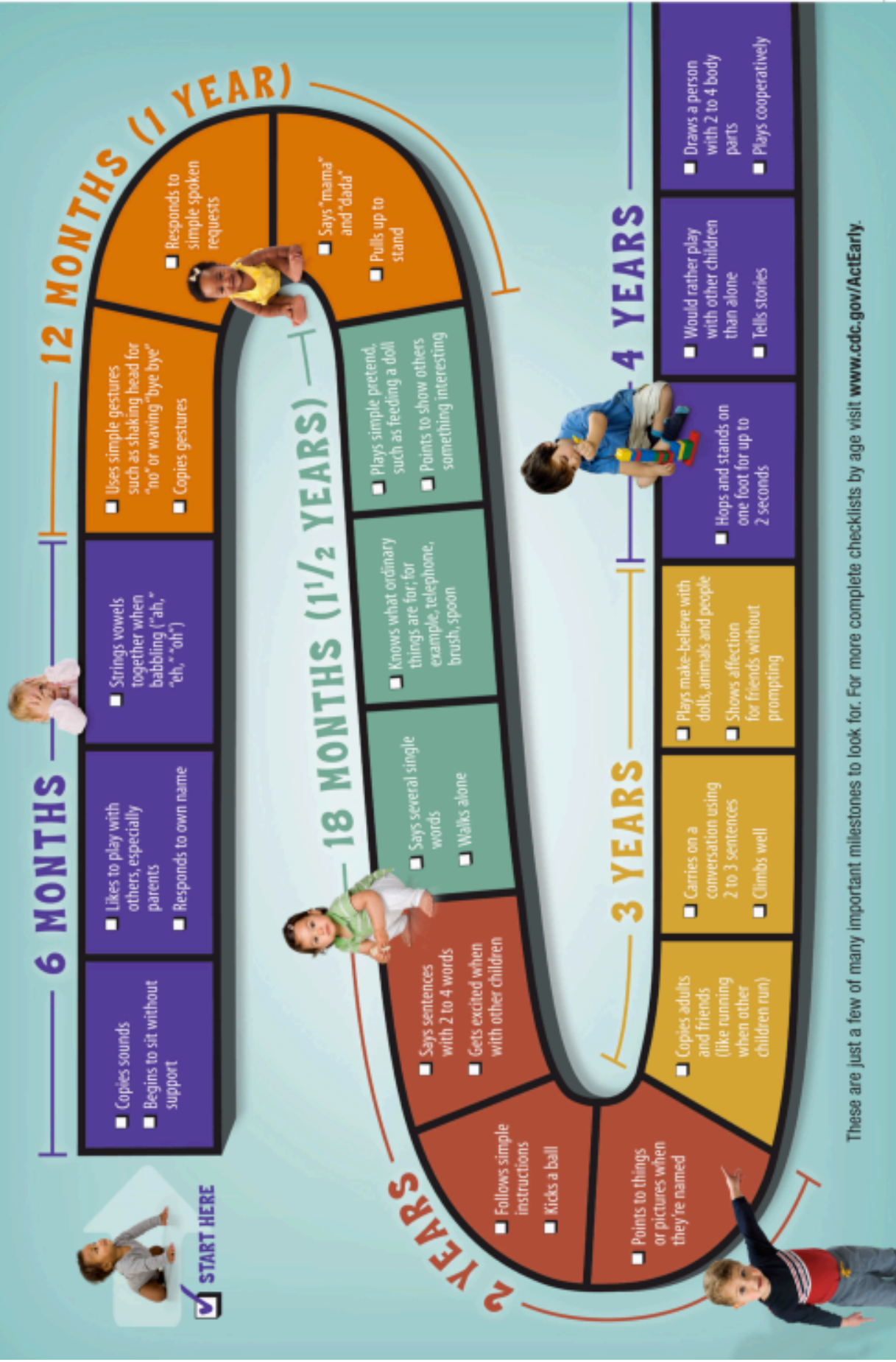


**CNNH**  
The Center for Neurological and  
Neurodevelopmental Health®

Learn the Signs. Act Early.

# Your Child's Early Development is a Journey

Check off the milestones your child has reached and share your child's progress with the doctor at every visit.



These are just a few of many important milestones to look for. For more complete checklists by age visit [www.cdc.gov/ActEarly](http://www.cdc.gov/ActEarly).

# Want To Be More Effective In Your Family Engagement Activities?



## Customized Training & Consultation



[www.spannj.org](http://www.spannj.org)

SPAN is your one-stop resource for learning, sharing and connecting regarding the development, education and health of children. We offer training, coaching and consultation designed to improve your practices in working with families.

- School Districts**- professional development to increase family engagement and improve outcomes for students with the greatest needs.
- Professionals in Health Care & Social Services**- help meet the needs of children, especially from underserved and diverse families.
- Corporate Employee Resource Groups**- help employees learn how to meet their child's needs, decrease on-the-job distractions.

With over 25 years of experience and nationally recognized speakers, we can work with you to develop customized trainings and action plans to meet your specific needs.



For more information regarding fees and services, contact:  
Carolyn Hayer, Director  
Parent & Professional Development  
[chayer@spannj.org](mailto:chayer@spannj.org)  
800-654-7726



# SUPPORTED DECISION MAKING & ALTERNATIVES TO GUARDIANSHIP

How would you feel if you had no say in:  
where you live? where you work? who you spend time with? what you can buy?

That's what can happen to youth and young adults with disabilities when someone else has the power to make decisions for them. For far too long, parents have been told that the only way to protect their youth/young adult is to get guardianship. Learn ways parents/families, professionals, children & youth with disabilities can get prepared to make choices and decisions about their own lives



**Visit our website to find more information on this important topic:**

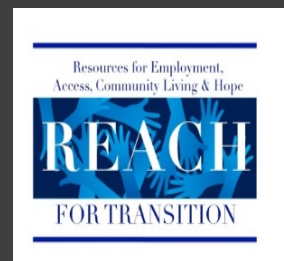
- ✓ Informative resources and fact sheets
- ✓ Recording of webinar presentation
- ✓ Links to helpful websites

**Visit:**

<http://tinyurl.com/SPAN-Supported-Decision-Making>



Statewide Parent Advocacy Network  
35 Halsey St | Newark, NJ | 07102  
973-642-8100  
[www.spanadvocacy.org](http://www.spanadvocacy.org)



# Connect with SPAN...



Call us  
1-800-654-SPAN (7726)

---



Visit our WEBSITE  
[www.SPANadvocacy.org](http://www.SPANadvocacy.org)

---



"LIKE" us on FACEBOOK  
[facebook.com/parentadvocacynetwork](https://facebook.com/parentadvocacynetwork)

---



Subscribe to our YOUTUBE channel  
[youtube.com/SPANadvocacy](https://youtube.com/SPANadvocacy)

---



Find us on PINTEREST  
[pinterest.com/SPANadvocacy](https://pinterest.com/SPANadvocacy)

---



Follow us on TWITTER  
[@SPANadvocacy](https://twitter.com/SPANadvocacy)

---



Subscribe to our E-NEWSLETTER at  
[www.spanadvocacy.org](http://www.spanadvocacy.org)

Each year, SPAN - the Statewide Parent Advocacy Network reaches over 30,000 families and children throughout New Jersey, helping parents help their children find success in today's world.

Your support of SPAN is needed. The demand for our services for children and families is increasing every day. SPAN serves families free of charge. We need your support to continue our vital services!

Your donation will help support our work with New Jersey's neediest children and their families. Our organization is a 501(c)3 nonprofit, so your contributions are tax deductible.

Visit us online at [www.spanadvocacy.org](http://www.spanadvocacy.org) to donate.

Join

**FRIENDS of**  
**SPAN**



**Empowered Families:**  
*Educated, Engaged, Effective*

**DONATE OR REGISTER BY COMPLETING THIS FORM**

**DONATE**

**YES!** I would like to make a donation of:

\_\_\_\_\_ \$50      \_\_\_\_\_ \$75      \_\_\_\_\_ \$250      \_\_\_\_\_ Other \$ \_\_\_\_\_ .00

To register for a workshop by mail, complete and return this form to:  
SPAN, 35 Halsey Street - 4th Floor, Newark, NJ 07102 Attn: Workshop Registrations

Name \_\_\_\_\_

Address \_\_\_\_\_

City, State ZIP \_\_\_\_\_

Phone \_\_\_\_\_ Cell \_\_\_\_\_

Email \_\_\_\_\_

I am a [ ] Parent [ ] Professional. Special accommodations needed? \_\_\_\_\_

**REGISTER**

**WORKSHOP SELECTION**

DATE	TOPIC	LOCATION

Visit us at [www.spannj.org](http://www.spannj.org) or call 1-800-654-SPAN for more information.



35 Halsey St.  
4th Floor  
Newark, NJ  
07102

NON-PROFIT  
ORGANIZATION  
US POSTAGE  
PAID  
PERMIT 298  
NEWARK NJ 07102

## Attend A Workshop! 5 Ways To Register!

Online: [www.spanadvocacy.org](http://www.spanadvocacy.org)

E-mail: [chayer@spannj.org](mailto:chayer@spannj.org)

Phone: 1-800-654-SPAN (7726)

Fax: 1-973-642-3766

Mail: 35 Halsey St - 4th Floor  
Newark, NJ 07102

**Register Early!  
Space Is Limited**



Like what you see? Look inside for information on how you can donate to support our work!

Scan Here For  
Workshop Information

